

ONCONEURONAL AND ANTINEURONAL ANTIBODIES IN PATIENTS WITH NEOPLASTIC AND NON-NEOPLASTIC PULMONARY PATHOLOGIES AND SUSPECTED FOR PARANEOPLASTIC NEUROLOGICAL SYNDROME

S. Michalak^{1,2}, S. Cofra³, A. Piatek³, J. Rybacka³, E. Wysłocka⁴, W. Kozubski⁵

¹Department of Neurochemistry and Neuropathology, Poznan University of Medical Sciences, Poznan, Poland; ²Neuroimmunological Unit, Polish Academy of Sciences, Poznan, Poland; ³Department of Respiratory Medicine, ⁴Department of Clinical Biochemistry and Laboratory Medicine, and ⁵Department of Neurology, Poznan University of Medical Sciences, Poznan, Poland

Abstract

Objective: Onconeural antibodies are important diagnostic tool in patients with suspicion of paraneoplastic neurological syndromes (PNS). However, their role in PNS pathophysiology and specificity for particular neurological manifestation remains unclear. The aim of this study was to evaluate onconeural and antineuronal antibodies in patients with pulmonary pathologies and suspected for PNS.

Material and methods: Twenty one patients with pulmonary pathologies were selected from the database of 525 consecutive patients with suspicion of PNS. Patients' sera were screened for the presence of onconeural and antineuronal antibodies by means of indirect immunofluorescence; the presence was confirmed by Western blotting. Clinical data were obtained from medical records, hospital data base, and questionnaire-based direct telephone contact with patients.

Results: Among 21 patients, aged 54 ± 11 , with pulmonary pathologies, the most frequent neurological manifestations were neuropathies. Typical PNS included paraneoplastic cerebellar degeneration (PCD) and limbic encephalitis (LE). We found cases with multiple onconeural antibodies (anti-Ri and anti-Yo) and co-existing PNS (PCD/LE). Well-defined onconeural antibodies were identified in 23.8% of patients. Among antineuronal antibodies, the most frequent were anti-MAG (23.8%). ROC curves analysis revealed high sensitivity of onconeural and antineuronal antibodies for typical PNS and lower for pulmonary malignancies.

Conclusions: Tests for antibodies are highly sensitive for the diagnosis of typical paraneoplastic neurological syndromes. Anti-myelin and anti-MAG antibodies are associated with non-neoplastic pulmonary diseases. Patients with well-defined onconeural antibodies require careful screening and follow-up, because the PNS diagnosis indicates a high probability of an underlying malignancy.

Key words: onconeural antibodies, antineuronal antibodies, lung cancer, paraneoplastic neurological syndromes, bronchial asthma, chronic obstructive pulmonary disease

INTRODUCTION

Paraneoplastic neurological syndromes (PNS) are defined as remote effects of systemic malignancy and autoimmune reactions are currently an accepted hypothesis of the underlying pathophysiology. Since 2004, when Graus et al [1] published the PNS diagnostic criteria, the following notions were introduced in clinical and laboratory practice: typical paraneoplastic syndromes and well-defined antibodies. According to Graus et al criteria [1], a definite PNS diagnosis can be made in subjects with:

1. typical PNS and/or onconeural antibodies with or without identification of systemic malignancy; and
2. non-typical PNS and onconeural antibodies with or without identification of systemic malignancy.

Thus, the presence of onconeural antibodies remains crucial for the diagnosis of paraneoplastic neurological syndromes. Typical syndromes include: limbic encephalitis, paraneoplastic cerebellar degeneration, Lambert-Eaton myasthenic syndrome, subacute sensory neuropathy, opsoclonus/myoclonus and dermatomyositis [1]. Well-defined onconeural antibodies are anti-Hu, anti-Ri, anti-Yo, anti-Ma/Ta, anti-Cv2, and anti-amphiphysin [1] are identified by means of Western blotting with the use of recombinant proteins. Antibodies causing positive reaction on indirect immunofluorescence, without confirmation by Western blotting, do not satisfy the definition of well-defined.

Routine indirect immunofluorescence tests enable identification of antineuronal antibodies like anti-myelin, anti-myelin-associated glycoprotein (anti-MAG), and anti-glutamic acid decarboxylase (anti-GAD). Paraneoplastic neurological syndromes have been reported in 4-5% of lung cancer patients [2]. Seute et al [3] found seven Lambert-Eaton myasthenic syndrome cases (1.6%), polyneuropathy in two cases (<1%), subacute cerebellar degeneration in one case (<1%), and limbic encephalitis in three cases (<1%) among 432 small cell lung cancer patients. Recent therapeutic recommendations do not exclude patients with lung cancer and PNS from potentially effective treat-

ment on the basis of the symptoms alone [4]. The pathomechanism believed to be responsible for the development of paraneoplastic neurological syndromes is immune-mediated. A broad spectrum of antibodies has been described in cancer patients with neurological symptoms. For the first time, Wilkinson and Zeromski [5] in 1965 identified antineuronal antibodies in a patient with sensory neuropathy in the course of lung cancer. As mentioned above, the evaluation of onconeuronal antibodies is an important step in PNS diagnosis. Up to 20% of patients with small-cell lung cancer have anti-Hu antibodies [6]. Lung cancer is associated with other onconeuronal antibodies reported: anti-CV2 [7], anti-Ri [8], and anti-amphiphysin [9]. On the other hand, anti-GAD antibodies were reported in stiff-man syndrome patient, who developed West Nile Fever and had also history of bronchial asthma [10]. The coexistence of different autoimmune disorders and overlapping of co-morbidities needs to be taken into consideration in differential diagnostics.

The aim of the present study was to evaluate onconeuronal and antineuronal antibodies in patients with neoplastic and non-neoplastic pulmonary pathologies and suspected for paraneoplastic neurological syndromes.

MATERIAL AND METHODS

A local Bioethics Committee at the University of Medical Sciences in Poznan, Poland approved this clinical study.

From the database of 525 consecutive patients with suspicion of neurological paraneoplastic syndromes we have selected 21 patients with pulmonary diseases. At the onset of neurological deficit, the patients' sera were tested for the presence of onconeuronal (anti-Hu, anti-Ri, anti-Yo, anti-Ma/Ta, anti-Cv2, and anti-amphiphysin) and antineuronal antibodies (anti-myelin, anti-MAG, and anti-GAD). The screening was performed by means of indirect immunofluorescence and the presence of onconeuronal antibodies (anti-Hu, anti-Ri, anti-Yo, anti-Ma/Ta, anti-Cv2, and anti-amphiphysin) was confirmed by Western blotting with

recombinants (EUROIMMUN, Luebeck, Germany). Antineuronal antibodies (anti-myelin, anti-MAG, and anti-GAD) were tested by means of indirect immunofluorescence only (EUROIMMUN, Luebeck, Germany), if there was no confirmation test available. Thus, onconeuronal antibodies tested in our study satisfied the definition of well-defined antibodies. A neurological paraneoplastic syndrome was diagnosed on the basis of Graus et al's criteria [1].

Clinical data analyzed in the patients included in the study involved the diagnosis of pulmonary pathology (neoplastic or non-neoplastic), paraneoplastic neurological syndrome (typical or non-typical), age, gender, and 2 to 5-year follow-up. Data for follow-ups were obtained from medical records, hospital data base, and direct phone contact with patients. The phone data were collected on the basis of a questionnaire prepared by the authors (J.R. & A.P.).

STATISTICAL ANALYSIS

The exact Fisher test and a t-test were used for statistical analyses. ROC (receiver operating characteristic) curves were construed to evaluate sensitivity and specificity of onconeuronal and antineuronal tests. $P < 0.05$ was accepted as indicative of significant differences. All statistical analyses were performed with the use of MedCalc Statistical Software version 10.3.1.0.

RESULTS

Twenty one patients aged 54 ± 11 with pulmonary diseases were selected from 525 patients with suspicion of a neurological paraneoplastic syndrome. There was no significant difference in the age of males ($n=6$) (56 ± 14) and females ($n=15$) (53 ± 10). The gender ratio of females to males was 2.5. The most frequent neurological manifestations were neuropathies ($n=8$; 38%) (Table 1). Typical PNS included paraneoplastic cerebellar degeneration (PCD) ($n=1$; 4.8%) and limbic encephalitis (LE) ($n=2$; 9.5%). In one case, LE coexisted with PCD as it was observed both clinically and on neuroimaging (Fig. 1 – Panels A, B, and C). It is note-

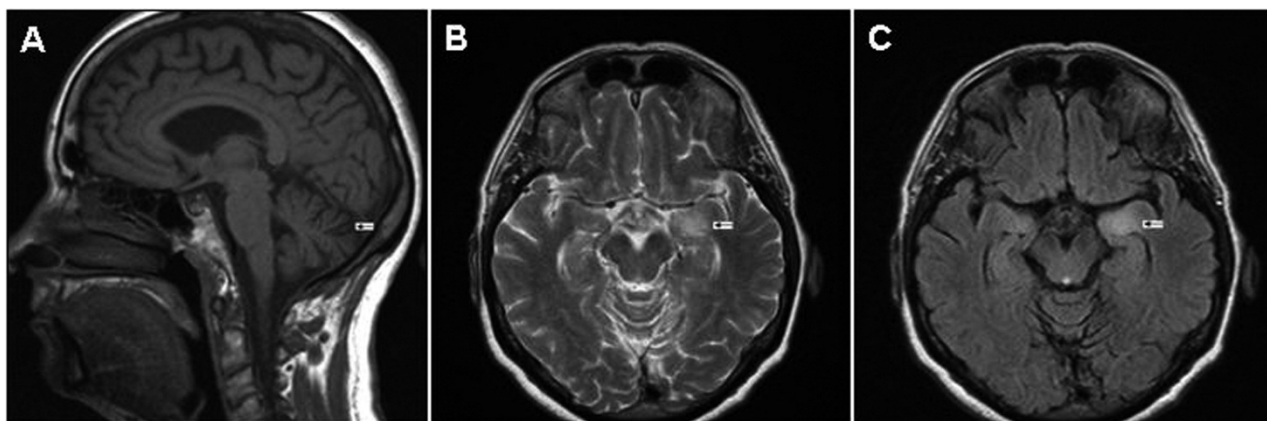


Fig. 1. Panel A - MRI of a patient with LE/ PCD and anti-amphiphysin antibodies, T1-weighted image reveals cerebellar atrophy (\rightarrow); Panel B - MRI of a patient with LE/PCD and anti-amphiphysin antibodies, T2-weighted image shows hyperintensity (\rightarrow) typical for limbic encephalitis; and Panel C - MRI of the patient with LE / PCD and anti-amphiphysin antibodies, FLAIR image shows hyperintensity (\rightarrow) typical for limbic encephalitis.

Table 1. Clinical data of 21 patients with pulmonary pathology selected from 525 subjects with suspicion of paraneoplastic neurological syndromes.

Patient	Age	Gender	Antibody	NPS	Pulmonary disease
J.F.	56	Male	Negative	Motor neuron disease	Small-cell lung cancer
J.W.	52	Male	Anti-Ri, anti-Yo	Neuropathy	Chronic obstructive pulmonary disease
B.K.	54	Female	Negative	Neuropathy	Non-small-cell lung cancer, brain metastases
K.K.	55	Female	Negative	Neuropathy	Non-small-cell lung cancer
S.P.	75	Male	Anti-Hu	Limbic encephalitis	Small-cell lung cancer
E.S.	42	Female	Negative	Pyramidal syndrome	Non-small-cell lung cancer
A.S.	41	Male	Negative	Pyramidal syndrome	Pulmonary sarcoidosis
S.K.	31	Female	Anti-myelin	Cerebellar syndrome	Bronchial asthma
W.J.	57	Female	Anti-MAG	Neuropathy	Bronchial asthma
A.S.	51	Female	Negative	Polymyositis	Non-small-cell lung cancer, ovarian cancer
K.G.	58	Female	Anti-MAG	Neuropathy	Small-cell lung cancer
H.R.	47	Female	Anti-Hu	Pyramidal syndrome	Small-cell lung cancer
K.L.	60	Female	Anti-Ri	Neuropathy	Breast cancer, pulmonary metastases
I.N.	53	Female	Negative	Brachial plexopathy	Pulmonary metastases
T.Z.	70	Female	Negative	Myopathy	Chronic obstructive pulmonary disease
A.S.	41	Male	Negative	Pyramidal syndrome	Pulmonary sarcoidosis
W.J.	57	Female	Anti-MAG	Neuropathy	Bronchial asthma
I.B.	38	Female	Anti-MAG	Myasthenia gravis	Bronchial asthma
F.C.	68	Male	Anti-MAG	Neuropathy	Small-cell lung cancer
A.K.	52	Female	Negative	Neuropathy	Small-cell lung cancer, brain metastases
A.B.	69	Female	Anti-amphiphysin	Limbic encephalitis, paraneoplastic cerebellar degeneration.	Non-small-cell lung cancer

Table 2. Number of patients with or without pulmonary malignancy and the presence of onconeural, antineuronal, and well-defined onconeural antibodies.

	Primary pulmonary malignancy	No primary pulmonary malignancy identified
Onconeural and antineuronal antibodies (n=11)	5 (45%)	6 (54%)
No onconeural and antineuronal antibodies present (n=10)	6 (60%)	4 (40%)
Well-defined onconeural antibodies (n=5)	3 (60%)	2 (40%)
No well-defined onconeural antibodies present (n=16)	8 (50%)	8 (50%)

worthy that in this case we found the presence of anti-amphiphysin antibodies and non small-cell lung cancer was diagnosed.

In one case with neuropathy, we observed a co-existence of two onconeural antibodies (anti-Ri and anti-Yo). Well-defined onconeural antibodies were identified in 5 patients (23.8%) (Table 1). Among antineuronal antibodies, the most frequent were anti-MAG (n=5; 23.8%). Interestingly, anti-myelin and anti-MAG were associated with bronchial asthma, the most frequent non-neoplastic respiratory tract disease

in our patients. There were no significant differences in the number of the patients with or without onconeural and antineuronal antibodies and pulmonary malignancy, nor were there any in the patients with or without well-defined onconeural antibodies and pulmonary malignancy (Table 2).

Comparison of ROC curves for all onconeural and antineuronal antibodies with well-defined onconeural antibodies did not show significant differences (Fig. 2). Nor were there any significant differences between ROC curves for onconeural and an-

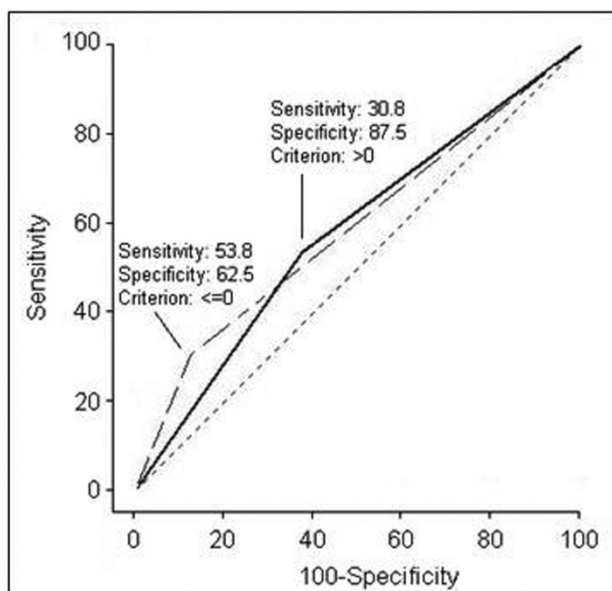


Fig. 2. Comparison of ROC curves for onconeural and antineuronal antibodies (solid line) and well-defined onconeural antibodies (dashed line) in patients with and without pulmonary malignancy.

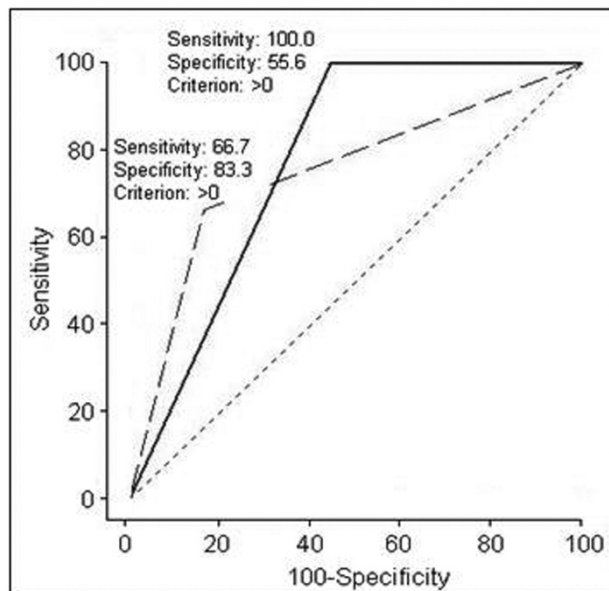


Fig. 3. Comparison of ROC curves for onconeural and antineuronal antibodies (solid line) with well-defined onconeural antibodies (dashed line) in patients with and without typical paraneoplastic neurological syndrome.

antineuronal antibodies and well-defined onconeural antibodies in the patients with or without typical PNS (Fig. 3). However, the sensitivity of the diagnosis of a typical PNS reached 100% for onconeural and antineuronal antibodies.

DISCUSSION

Clinical significance of onconeural antibodies is limited to the use of indirect immunofluorescence and Western blotting in the diagnostic procedures of paraneoplastic neurological syndromes. Despite advanced immunological studies that have revealed antibodies acting against structures of the nervous system, the pathomechanism of neurological paraneoplastic syndromes remains incompletely recognized. Some reports [11] address the onconeural antibodies as co-existing with and predicting cancer, rather than inducing a neurological syndrome. Seronegative patients manifesting typical clinical paraneoplastic syndromes fulfill Graus's criteria for a definite diagnosis, when systemic malignancy is identified. Furthermore, immunosuppressive treatment [12] and intravenous immunoglobulins [13] are clinically ineffective, indicating an involvement of a different, probably metabolic pathomechanism. The latter possibility is suggested by the clinical observation of a coexisting myasthenic Lambert-Eaton syndrome and subacute paraneoplastic degeneration. Graus et al [14] noted an improvement of myasthenic symptoms as a result of an immunomodulating treatment, while the symptoms of coexisting subacute paraneoplastic cerebellar degeneration persisted. Experimental studies suggest metabolic effects of systemic malignancy on the cerebellum [15], spinal cord [16], and peripheral nerves [17].

In the present study, we analyzed onconeural and

antineuronal antibodies in patients with pulmonary pathologies selected from subjects with suspicion of paraneoplastic neurological syndromes. Sensitivity of onconeural and antineuronal antibodies evaluation in patients with and without pulmonary malignancy was higher (53.8%) than that for well-defined onconeural antibodies (30.8%), although the specificity of well-defined onconeural antibodies was better (87.5%). Comparison of ROC curves for both tests did not show any significant difference. The best sensitivity of the diagnosis of typical paraneoplastic syndrome (100%) for onconeural and antineuronal antibodies is noteworthy and indicates usefulness of those tests for PNS, rather than for pulmonary malignancy. This is in opposition to Pittock et al's [11] suggestions mentioned above. However, the population examined in that study consisted of all patients with PNS suspicion, while in our present study we evaluated subjects with pulmonary disease only. In our study we found multiple antibodies in 1 case (4.8%) only, while in studies involving patients with a spectrum of malignancies 31% of cases had more than one antibody [11]. Those authors [11] stated that the presence of multiple onconeural antibodies suggests autoimmune reaction directed against antigens localized at different levels of the nervous system, which leads to multifocal signs. According to Graus et al's diagnostic criteria [1], onconeural antibodies are significant for definite diagnosis of PNS as such, not for a specific syndrome. That was also the case in the present study showing high sensitivity of antibodies for the diagnosis of typical PNS, rather than for malignancy. Moreover, onconeural antibodies are not recognized as markers of malignancy in clinical practice.

In our group of patients, we also observed one case (4.8%) of multiple typical paraneoplastic neurological

syndromes, a paraneoplastic cerebellar degeneration and limbic encephalitis. Several case studies show co-existence of PNS: paraneoplastic cerebellar degeneration with Lambert-Eaton myasthenic syndrome [14], or limbic encephalitis with neuropathy or with paraneoplastic cerebellar degeneration [18]. Multifocal PNS may suggest multiple onconeural antibodies; however, in the present study, the patient with PCD and LE had anti-amphiphysin antibodies only.

We also found non-neoplastic diseases, e.g., bronchial asthma associated with the presence of anti-myelin and anti-myelin-associated glycoprotein antibodies. Overlapping and/or coexistence of autoimmune reactions are well known from clinical practice. No well-defined onconeural antibodies were found in non-neoplastic pulmonary diseases.

Autoimmunity has been reported as a source of factors modulating angiogenesis, and proangiogenic effects of sera from patients with systemic diseases depend on the intensity of radiological signs of a pulmonary pathology [19]. On the other hand, the intensity of proangiogenic stimulation does not correlate with dyspnea or lung function tests [19]. However, a suggestion for an association of autoimmunity, pulmonary pathology, and modulation of angiogenesis has been made [19]. Proangiogenic factors, such as vascular endothelial growth factor (VEGF), enhance vascular permeability and increase blood-brain barrier leakage and these factors' expression is increased in autoimmune central nervous system diseases [20]. Thus, autoimmunity directed against the nervous system associated with pulmonary pathology could, via stimulation of angiogenesis, facilitate paraneoplastic reaction.

In summary, both onconeural and antineuronal antibodies are associated with pulmonary diseases. The evaluation of onconeural and antineuronal antibodies is highly sensitive for the diagnosis of typical paraneoplastic neurological syndromes. Lower specificity of onconeural and antineuronal antibodies tests indicate complex autoimmune reactions observed in paraneoplastic neurological syndromes and the possibility of nonimmune-mediated pathomechanisms. Anti-myelin and anti-MAG antibodies are associated with non-neoplastic pulmonary diseases. Careful screening and follow-up are needed for patients with well-defined onconeural antibodies, because the diagnosis of paraneoplastic neurological syndromes indicates a high probability of an underlying malignancy.

Conflicts of interest: The authors declared no conflicts of interest in relation to this article.

REFERENCES

- [1] Graus F, Delattre JY, Antoine JC, Dalmau J, Giometto B, Grisold W, Honnorat J, Silveis Smitt P, Vedeler Ch, Verschuren JJ, Vincent A, Voltz R, for the Paraneoplastic Neurological Syndrome Euronetwork. Recommended diagnostic criteria for paraneoplastic neurological syndromes. *J Neurol Neurosurg Psych* 2004; 75: 1135-40.
- [2] Swash M, Schwartz MS. Paraneoplastic syndromes. In: Johnson RT (ed). *Current Therapy in Neurologic Diseases*. BC Decker, Philadelphia 1990, 236-43.
- [3] Seute T, Leffers P, ten Velde GPM, Twijnstra A. Neurologic disorders in 432 consecutive patients with small cell lung carcinoma. *Cancer* 2004; 100: 801-6.
- [4] Spiro SG, Gould MK, Colice GL. Initial evaluation of the patient with lung cancer: symptoms, signs, laboratory tests, and paraneoplastic syndromes. *Chest* 2007; 132: 149S-60S.
- [5] Wilkinson PC, Zeromski J. Immunofluorescent detection of antibodies against neurones in sensory carcinomatous neuropathy. *Brain* 1965; 88: 529-83.
- [6] Anderson NE, Rosenblum MK, Graus F, Wiley RG, Posner JB. Autoantibodies in paraneoplastic syndromes associated with small-cell lung cancer. *Neurology* 1988; 38: 1391-98.
- [7] Yu Z, Kryzer TJ, Griesmann GE, Kim K, Benarroch EE, Lennon VA. CRMP-5 neuronal autoantibody: marker of lung cancer and thymoma-related autoimmunity. *Ann Neurol* 2001; 49: 146-54.
- [8] Moll JW, Antoine JC, Brashear HR, Delattre J, Drlicek M, Dropcho EJ, Giometto B, Graus F, Greenlee J, Honnorat J. Guidelines on the detection of paraneoplastic antineuronal-specific antibodies: Report from the Workshop to the Fourth Meeting of the International Society of Neuro-Immunology on paraneoplastic neurological disease. *Neurology* 1995; 45(10):1937-41.
- [9] Saiz A, Dalmau J, Husta Butler M, Chen Q, Delattre JY, De Camilli P, Graus F. Anti-amphiphysin I antibodies in patients with paraneoplastic neurological disorders associated with small cell lung carcinoma. *J Neurol Neurosurg Psych* 1999; 66: 214-17.
- [10] Hassin-Baer S, Kirson ED, Shulman L, Buchman AS, Bin H, Hindiyeh M, Markevich L, Mendelson E. Stiff-person syndrome following West Nile fever. *Arch Neurol* 2004; 61: 938-41.
- [11] Pittock SJ, Kryzer TJ, Lennon VA. Paraneoplastic antibodies coexist and predict cancer, not neurological syndrome. *Ann Neurol* 2004; 56: 715-19.
- [12] Keime-Guilbert F, Graus F, Broët P, Rene R, Molinuevo JL, Ascaso C, Delattre JY. Clinical outcome of patients with anti-Hu-associated encephalomyelitis after treatment of the tumor. *Neurology* 1999; 53: 1719-26.
- [13] Keime-Guilbert F, Graus F, Fleury A, René R, Honnorat J, Broët P, Delattre J-Y. Treatment of paraneoplastic neurological syndromes with antineuronal antibodies with a combination of immunoglobulins, cyclophosphamide, and methylprednisolone. *J Neurol Neurosurg Psych* 2000; 68: 479-82.
- [14] Graus F, Lang B, Pozo-Rosich P, Saiz A, Casamitjana R, Vincent A. P/Q type calcium channel antibodies in paraneoplastic cerebellar degeneration with lung cancer. *Neurology* 2002; 59: 764-66.
- [15] Michalak S, Wender M, Michalowska-Wender G. Cachexia-induced cerebellar degeneration: involvement of serum TNF and MCP-1 in the course of experimental neoplastic disease. *Acta Neurobiol Exp* 2006; 66(2): 113-22.
- [16] Michalak S, Ambrosius W, Osztynowicz K, Kozubski W. ATP-ases activities, lipids and heat shock protein 70kDa in spinal cord in rats with experimental neoplastic disease. *Res J Med Sci* 2007; 1(4): 199-208.
- [17] Michalak S, Adamczewska-Gonczewicz Z, Szczech J. ATPases and lipid peroxidation in the rat sciatic nerve in the course of experimental neoplastic disease. *Exp Mol Pathol* 2006; 81(1): 92-99.
- [18] Gultekin SH, Rosenfeld MR, Voltz R, Eichen J, Posner JB, Dalmau J. Paraneoplastic limbic encephalitis: neurological symptoms, immunological findings and tumor association in 50 patients. *Brain* 2000; 123: 1481-94.
- [19] Zielonka TM, Demkow U, Zycinska K, Filewska M, Korzeniewska M, Radzikowska E, Bialas-Chromiec B, Kus J, Wardyn KA, Skopinska-Rozewska E. Angiogenic activity

of sera from patients with systemic autoimmune diseases in relation to clinical, radiological, and functional pulmonary status. *J Physiol Pharmacol* 2008; 59 Suppl 6: 791-800.

[20] Argaw AT, Zhang Y, Snyder BJ, Zhao ML, Kopp N, Lee SC, Raine CS, Brosnan CF, John GR. IL-1 regulates blood-brain barrier permeability via reactivation of the hypoxia-angiogenesis program. *J Immunol* 2006; 177: 5574-84.

Corresponding author:

Slawomir Michalak
Przybyszewskiego St. 49
60-355 Poznan
Poland
Phone: +48 61 8691443
Fax : +48 61 8691444
E-mail: swami622@gmail.com